



◆ klumex ◆

# Commercial brochure

2023

High-tech  
metal stamping

# What we do

We are actively participating in engineering concept development and in manufacturing stamped parts.

No matter where you are located, we offer an integral service from development through manufacture.

## Why trust KLUMEX?



Experience and Quality



Client oriented



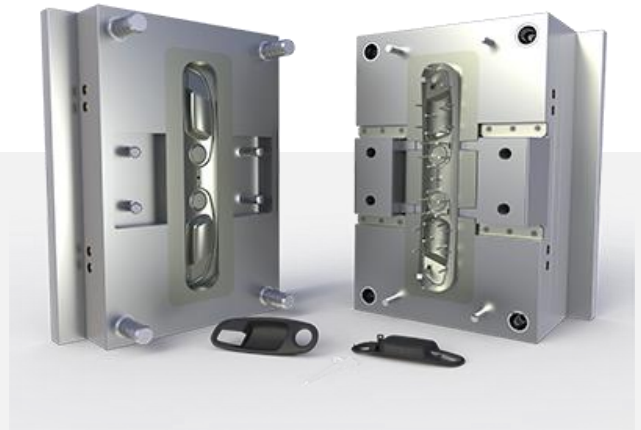
Quality assurance

## Our services



### STAMPING MANUFACTURE

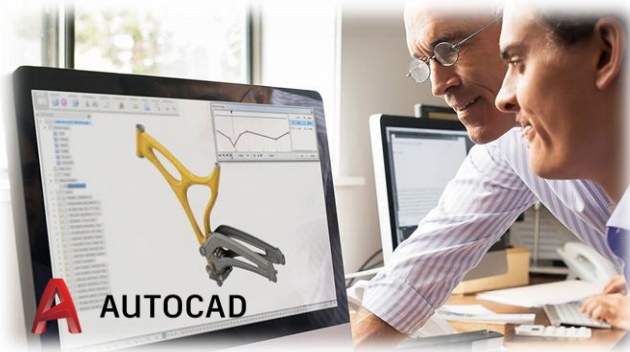
- Sheared
- Trimming
- Bending
- Punching
- Stamping
- Embedded
- Marking
- Shaving



### STAMPING DIE DEVELOPMENT

- Stamping die construction.
- Refurbish and engineering level update.
- Preventive and corrective maintenance.
- Development of checking fixtures.

# Full Project Development and Management

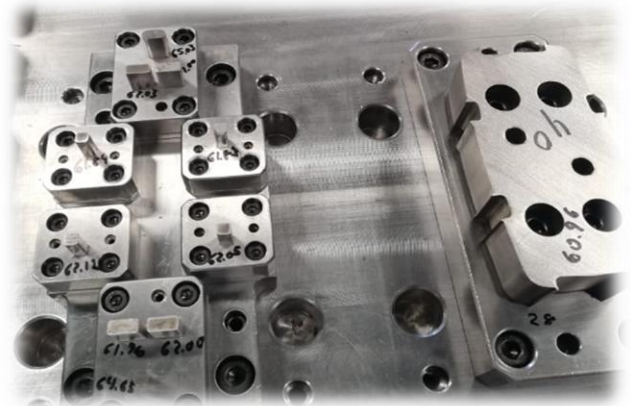


## DESIGN WITH LAST GENERATION SOFTWARES

High level CAD experience.

## PRECISION MANUFACTURE

Every die manufactured in KLUMEX is assured by years of experience.



## OUR HIGH LEVEL PERFORMANCE

Our high engineering and process level always guarantee maximum efficiency





◆ klumex ◆

# We guarantee quality in your project through our **Quality System**

Program development life cycle

## PHASE 1

Diagnosis of our client's needs and feasibility analysis.

## PHASE 2

Product and process design

## PHASE 3

Product and process validation

## PHASE 4

Production launching

We are certified on:



**ISO 9001**

Gestión de calidad



**IATF 16949**

# Benefits of working with us

Consultancy **before**,  
**during** and **after** the  
sale in every project.

We bring **innovation**  
and **creativity** in every  
project.

We guarantee **quality**  
and **precision** in every  
part.

We meet **deadlines** and  
**agreements** in every  
project.

We reach your  
goals through team  
work.

We watch over the  
quality and  
guarantee every part.



Aerospacial



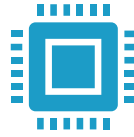
Health



Automotive



Agriculture  
and irrigation



Electric and  
electronic



Home Appliances

## Industries where we participate



## Our clients

**taurus**group

**Kores** 

  
**Nursery Supplies**

**AMETEK**<sup>®</sup>

**7-ELEVEN**<sup>®</sup>

 **Resirene**

TIC TAC TECH  
**TTC**

**WR**  
**CONTROLS**  
GROUP

 **TRUPER**<sup>®</sup>





◆ klumex ◆



Private Santa Ana, #6356 A  
Col. San Antonio  
Cacalotepec CP 72828  
San Andrés Cholula,  
Puebla, Mexico.



Marie Curie Street 7,  
Beta Building, Floor 7  
Rivas , Madrid, Spain  
28521



[info@klumex.com](mailto:info@klumex.com)



+52 222 604 3366  
+52 55 4855 0033

[www.klumex.com](http://www.klumex.com)

